

Indiana Enterprise Center

1308 S. Rogers Street
Bloomington, Indiana 47403

Owner
First Capital Group
1720 North Kinsler Place
Bloomington, Indiana 47404

Architect
RATIO Architects, Inc.
Suite 100, Schrader Building
107 South Pennsylvania Street
Indianapolis, Indiana 46204
317-633-4040

Structural Engineer
CE Solutions, Inc.
10 Shoshone Drive, Suite 100
Carmel, Indiana 46032
(317) 818-1912
(317) 818-1911

Mechanical / Electrical Engineer
Applied Engineering
9100 Keystone Crossing, Suite 200
Indianapolis, Indiana 46240
(317) 810-4141

Civil Engineer
Bynum Fanyo & Associates
528 N. Walnut Street
Bloomington, Indiana 47404
(812) 332-8030
(812) 339-2990

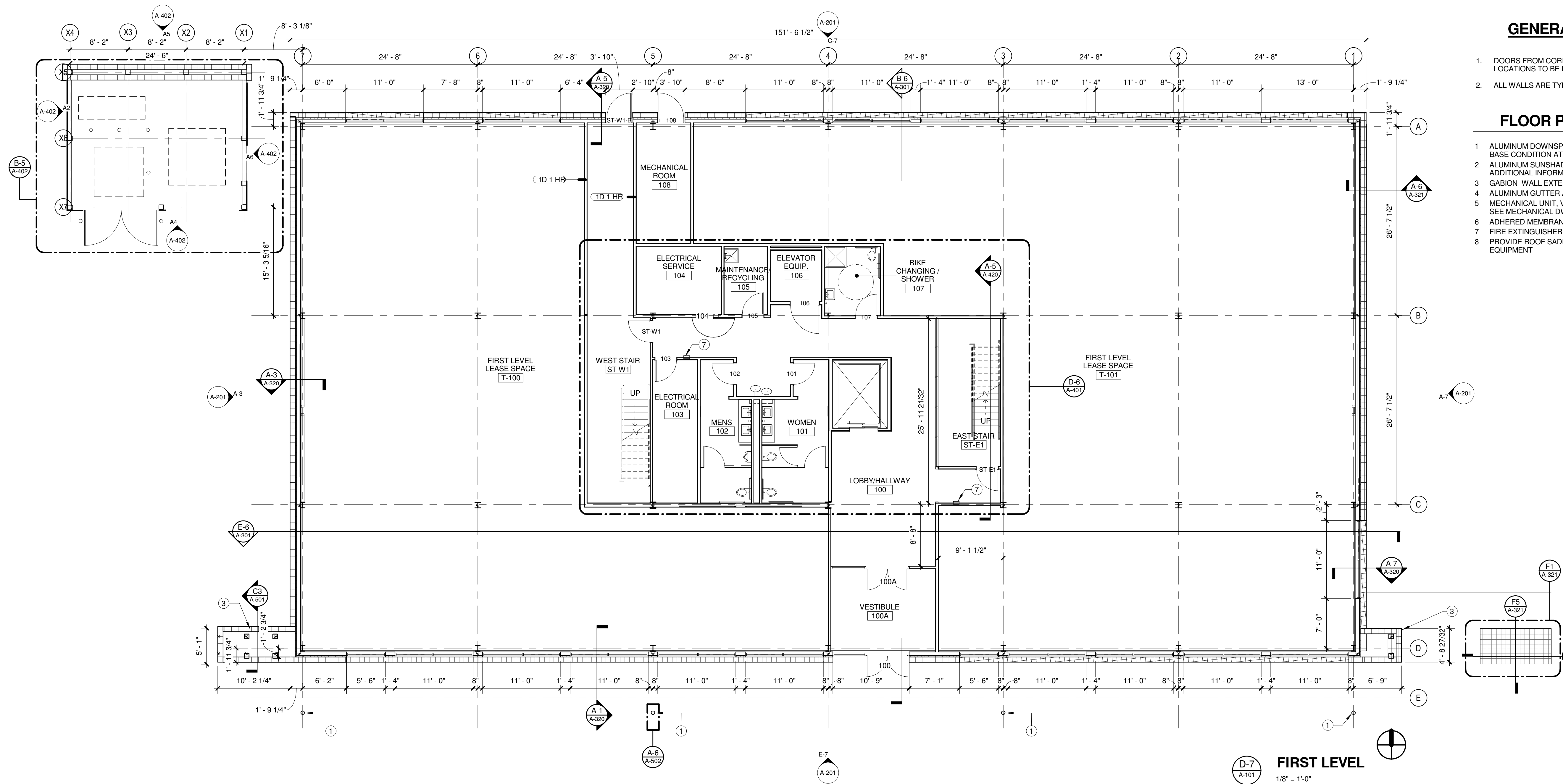
Landscape Architect
RATIO Architects, Inc.
Suite 100, Schrader Building
107 South Pennsylvania Street
Indianapolis, Indiana 46204
317-633-4040

GENERAL PLAN NOTES

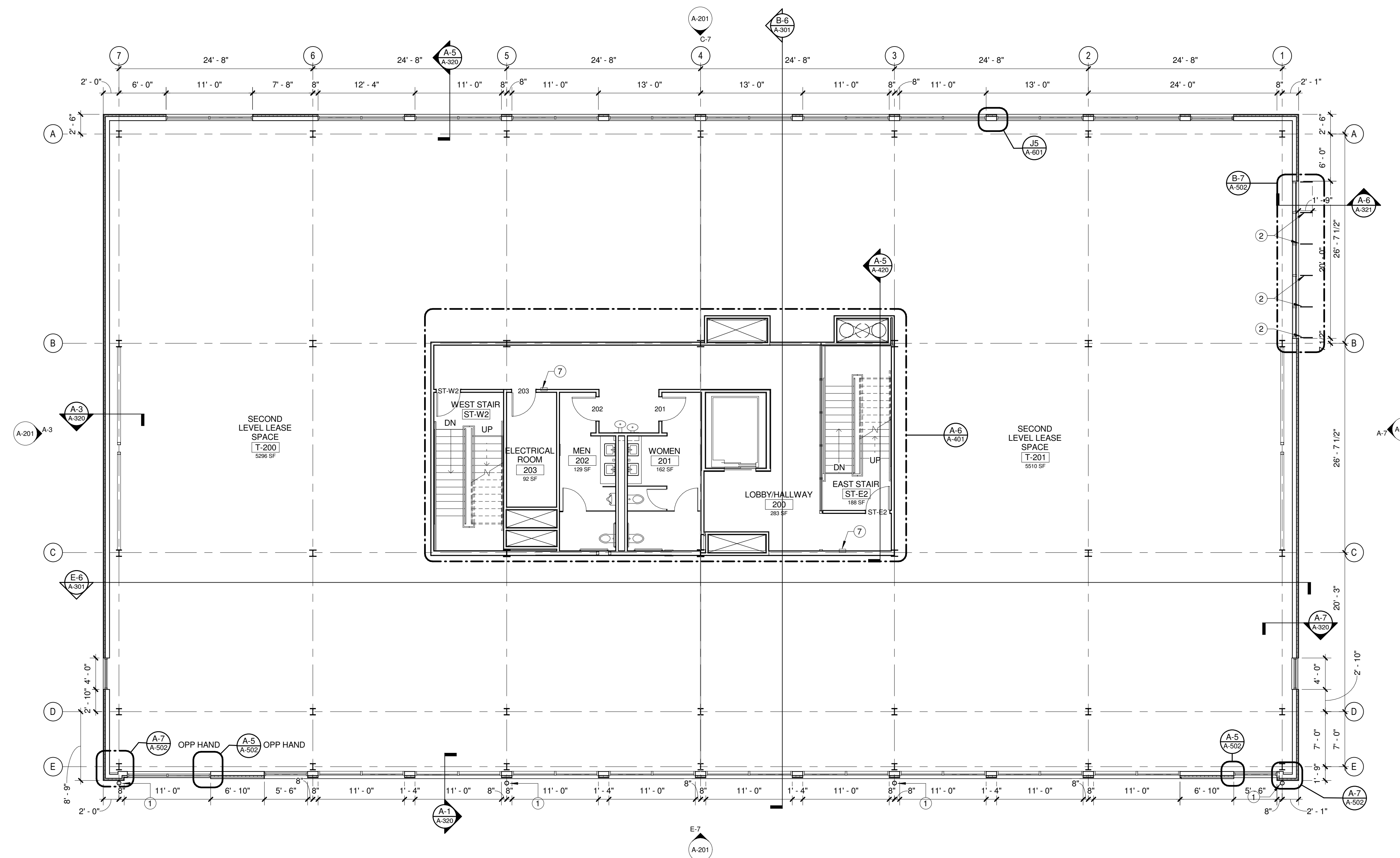
- DOORS FROM CORE TO TENANT SPACES FUTURE AND N.I.C. LOCATIONS TO BE DETERMINED.
- ALL WALLS ARE TYPE 1D UNLESS NOTED OTHERWISE.

FLOOR PLAN - KEY NOTES

- ALUMINUM DOWNSPOUT - REFER TO DETAIL A-3/A-501 FOR BASE CONDITION ATTACHMENT.
- ALUMINUM SUNSHADE - VERTICAL. REFER TO DETAILS FOR ADDITIONAL INFORMATION.
- GABION WALL EXTENSION.
- ALUMINUM GUTTER AND FASCIA.
- MECHANICAL UNIT, VENT, FAN, OR OTHER MECH. EQUIPMENT. SEE MECHANICAL DWGS.
- ADHERED MEMBRANE ROOF.
- FIRE EXTINGUISHER CABINET.
- PROVIDE ROOF SADDLES ON HIGH SIDE OF ALL ROOF-TOP EQUIPMENT.



FIRST LEVEL
1/8" = 1'-0"



SECOND LEVEL
1/8" = 1'-0"

100% Construction Documents Bid Package #2

SHEET ISSUE		OCT. 15, 2008
1	Bid Package #1	10.15.08
2	Bid Package #2	11.21.08

CHECKED BY

APPROVED BY

PROJECT NO.
08044.000



RATIO
SHEET TITLE
FIRST AND SECOND LEVEL PLANS

SHEET NUMBER
A-101